



Company Profile



FUJI LIFTS KW



CONTENTS

	PAGE NO.
10 COMPANY BRIEF	2-3
9 MISSION & VISSION	4-5
8 JOB REFERENCE	6-53
7 FUJI TEAM	54-55
6 FACTORY	56-57
5 BUSINESS DEVELOPMENT CHART	58
4 MAJOR CUSTOMERS	59
3 TARGET CLIENTS & PRODUCT CATOGORIES PRODUCT APPLICATION	60-61
2 STRATEGIES, MACHINES & EQUIPMENT	62-63
1 CERTIFICATE	64-65

COMPANY BRIEF

Fuji Lifts KW is a leading producer and supplier of complete lifts in Kuwait as well as other countries which is added to the group company UNITED INTEGRATED HOLDING GROUP and under UNITED ELEVATORS FACTORY .

Fuji Lifts KW is the market leader in Kuwait manufacturing and distributing different types of Elevator products, Its products range include different sizes of cabins, door panels, door frames different sizes of brackets machines guiderails door operators landing doors, top tracks, controllers and all other accessories which is certified by TUV Germany, Bureau Veritas as well as Kuwait fire brigade for its quality.

The Company's Export activities has made Fuji Lifts KW well known to Neighboring countries like Saudi, Dubai, Qatar etc as a result we have opened a separate store in Dammam Saudi as well as FUJI LIFTS KW in Kuwait with Joint venture from FUJI ELEVATORS MALAYSIA to build up its further reputation and to market complete lift as Fuji Lifts KW.

The Company has grown from strength to strength since its first production of elevator parts to a most modern Factory Including programmable CNC punching, Bending and cutting machines in Subhan on 17500 SQ. M area and started producing different types of cabins and other elevator parts and a different section for decoration is also included in the factory with programmable CNC lamination machine.

The Company strives to maintain its strength by supplying more products to different countries as per the requirements of the customer in different countries and also improving the production process and implementing technological process.

As well as it strives hard to maintain and increase the strength of the group Company UNITED INTEGRATED HOLDING GROUP.



BUSINESS PROFILE

Business Trade Name : **FUJI ELEVATOR FACTORY**
Business Address : Subhan South Street-101 Block-9 Kuwait
Nature of Business : Manufacturer
Plant and Office Area : Plant : 17500 sq.m / Office : 1000 sq.m
Date Established : JUNE 1987



Kind of Ownership : Corporation
 Contact Numbers : Tel : 24763799, 24714787
 : Fax : 00965-24746029
 Email : info@fujiliftskw.com
 Website : www.fujiliftskw.com

MISSION AND VISION



Quality and Environmental Policy

We, at United Elevator Factory believe that the establishment of an effective quality and environmental management system will help our company achieve its vision of becoming a highly respected fabricator manufacturer, Installer, and elevator maintenance of various Kinds of Elevators and its parts

The company is strongly determined to lead in this industry by providing satisfaction to our customers and complying with all applicable environmental laws and other requirements that we subscribe to. We will achieve this by:

- Addressing the needs and expectations of our customers in a timely manner;
- Continually improving our processes and manpower through innovation training
- Continually raising quality and environmental awareness within the Company and our customers & suppliers as well;
- Developing sound practices for Energy saving.

It is imperative that all personnel understand this policy and that all relevant objectives/targets formulated are for the continual improvement of the quality and environmental management system.



Purpose, Scope and Applicable Standards

Purpose and Scope

This Integrated Quality and Environmental Management System Manual documents United Elevator Factory co WLL quality and environmental systems as a company engaged in the manufacturing industry, to demonstrate the company's commitment to consistently provide products and services that meet customer and regulatory requirements, and continual improvement.

This manual establishes compliance with the standards listed in the Applicable Standards section of this manual. This Quality and EMS Manual applies to all processes and functions within United Integrated Holding Group office/ Subhan South Kuwait

Applicable Standards

- ISO 2000 : 9001 Certification for Quality Standard
- TUV certification for Manufacturing Fuji Lifts
- Fire Brigade Approval for 1.6m/s and 2.5m/s lift based in Kuwait

Job References



 **SULTHAN AZAD**
Stop : 12, 1000 KG





OMER OMESH AJMI

Stop : 15, 1000 KG

Job References



 **ABDULLAH ABID MUTHERI**
Stop : 18, 1000 KG



 **Khalid Salim Al Adwa, Hawally**
Stop : 10, 1000 KG





 **BIO AL AMEL, Hawally**
Stop : 21, 1000 KG

Job References

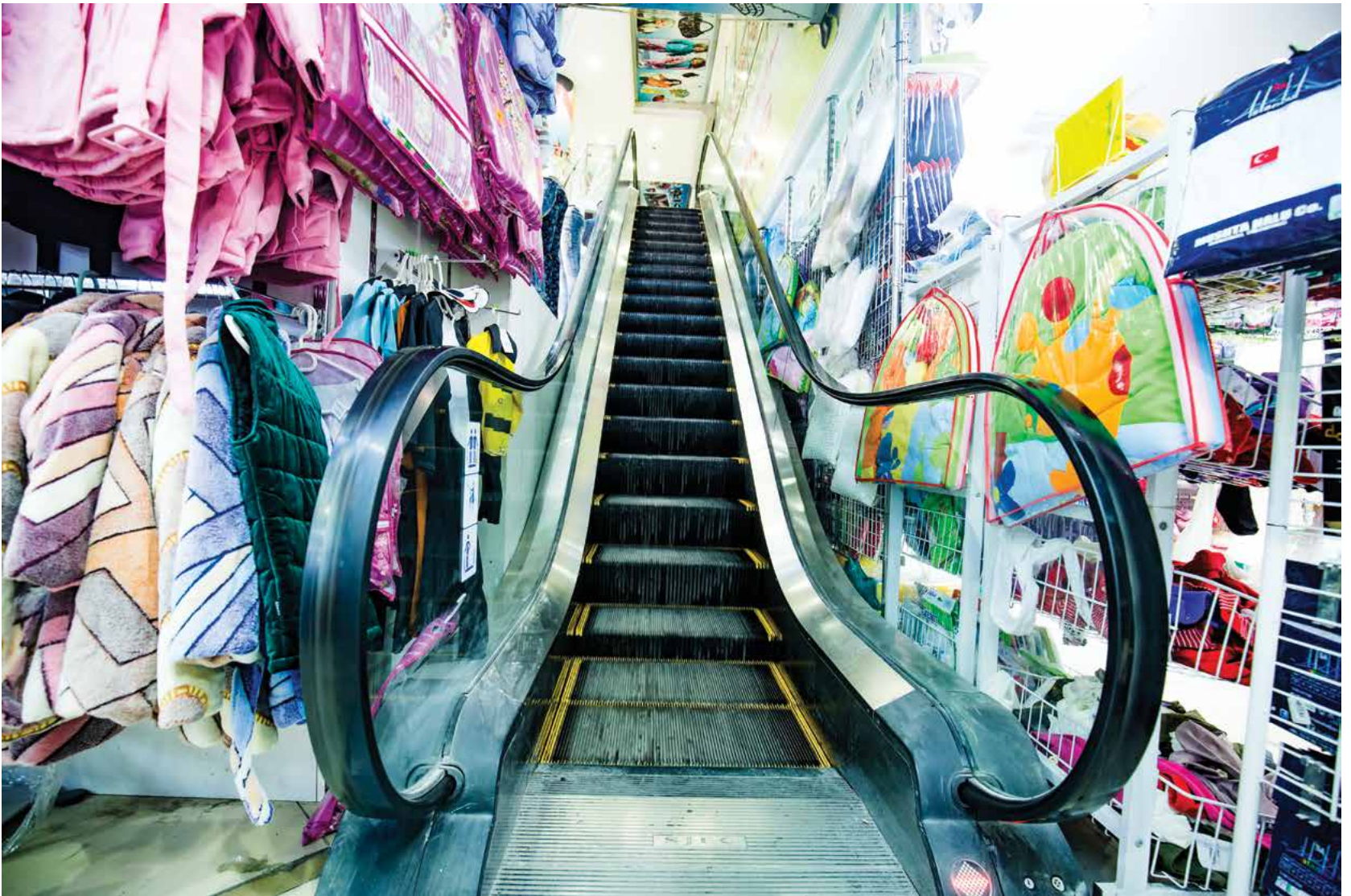


Jazeera Complex, Hawally

Height - 4.5 Mtr.

Degree - 30°





MRG Yusefi, Salmiya

Hight - 4.5 Mtr.

Degree - 30°



Job References



IBRAHIM SHEHLI, Mehboulah

Stop : 21, 1000 KG



KHALID AL MIZRIN, Mehboulah

Stop : 15, 1000 KG



Abdullah Al Ajeel, Mehboulah

Stop : 11, 1000 KG

Job References



 **Khalid Salim Al Adwa, Mehboulah**
Stop : 12, 1000 KG





Salah Al Jeri, Mehboulah

Stop : 11, 1000 KG

Job References



Eleyas Raizi, Abuhalifa

Stop : 11, 1000 KG



Khalid Salim Al Adwa, Mangaf

Stop : 12, 14 - 1000 KG



Job References



 **Hotel Bravo, Salmiya**
Stop : 18, 12 - 1000 KG



 **Hotel Bravo, Salmiya**
Stop : 18, 12 - 1000 KG






Abdullah Al Ajeel, Mangaf

Stop : 12 - 1000 KG

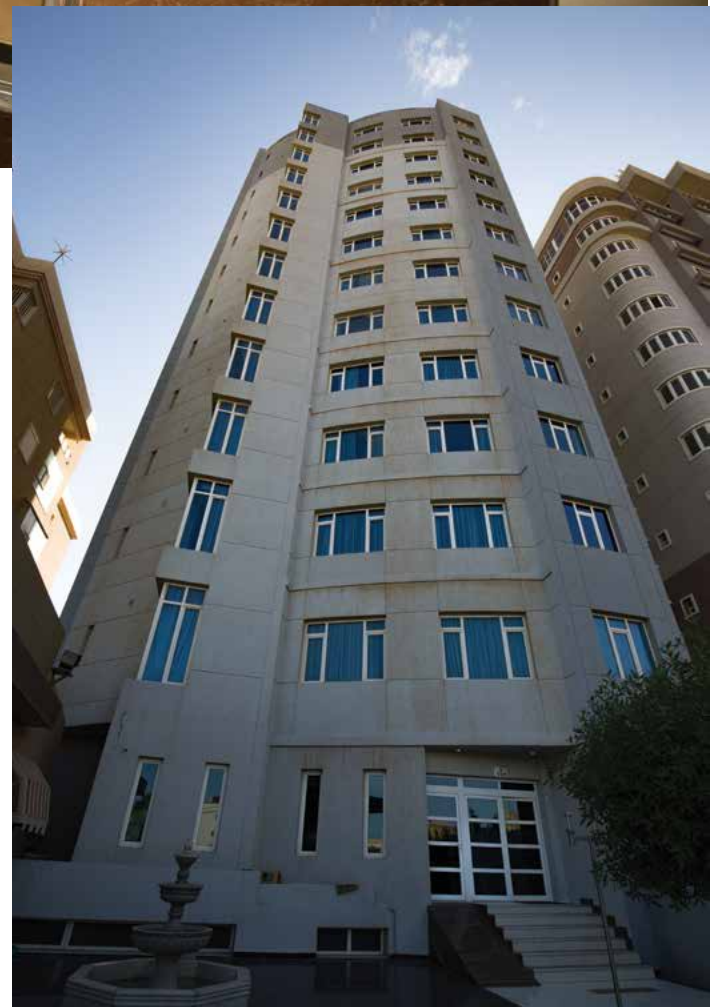
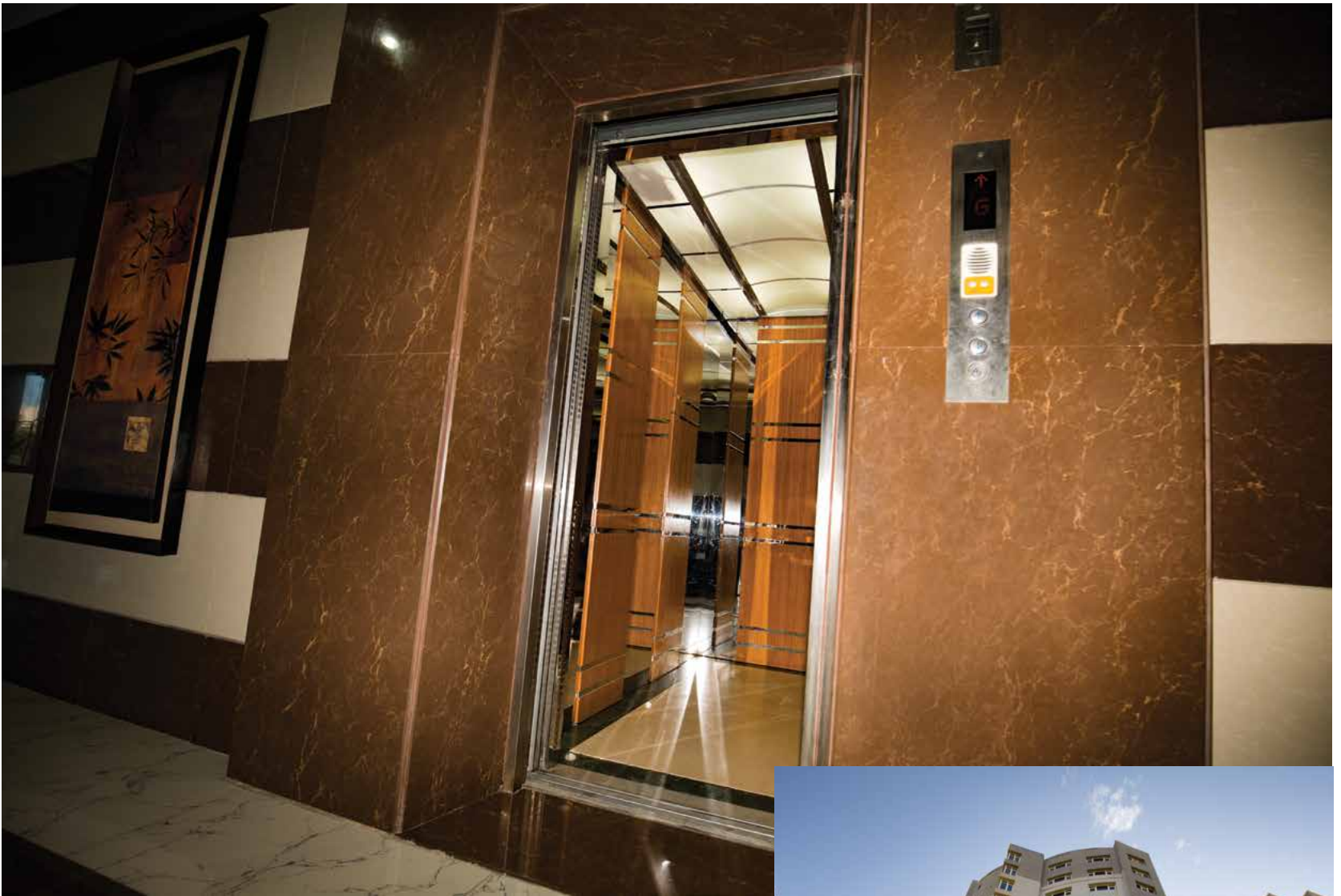


Job References



 **Dr. Adwani, Mahboulah**
Stop : 13, 12 - 1000 KG





Omer Omesh Ajimi, Mahboulah

Stop : 14 - 1000 KG

Job References



Hotel , Salmiya

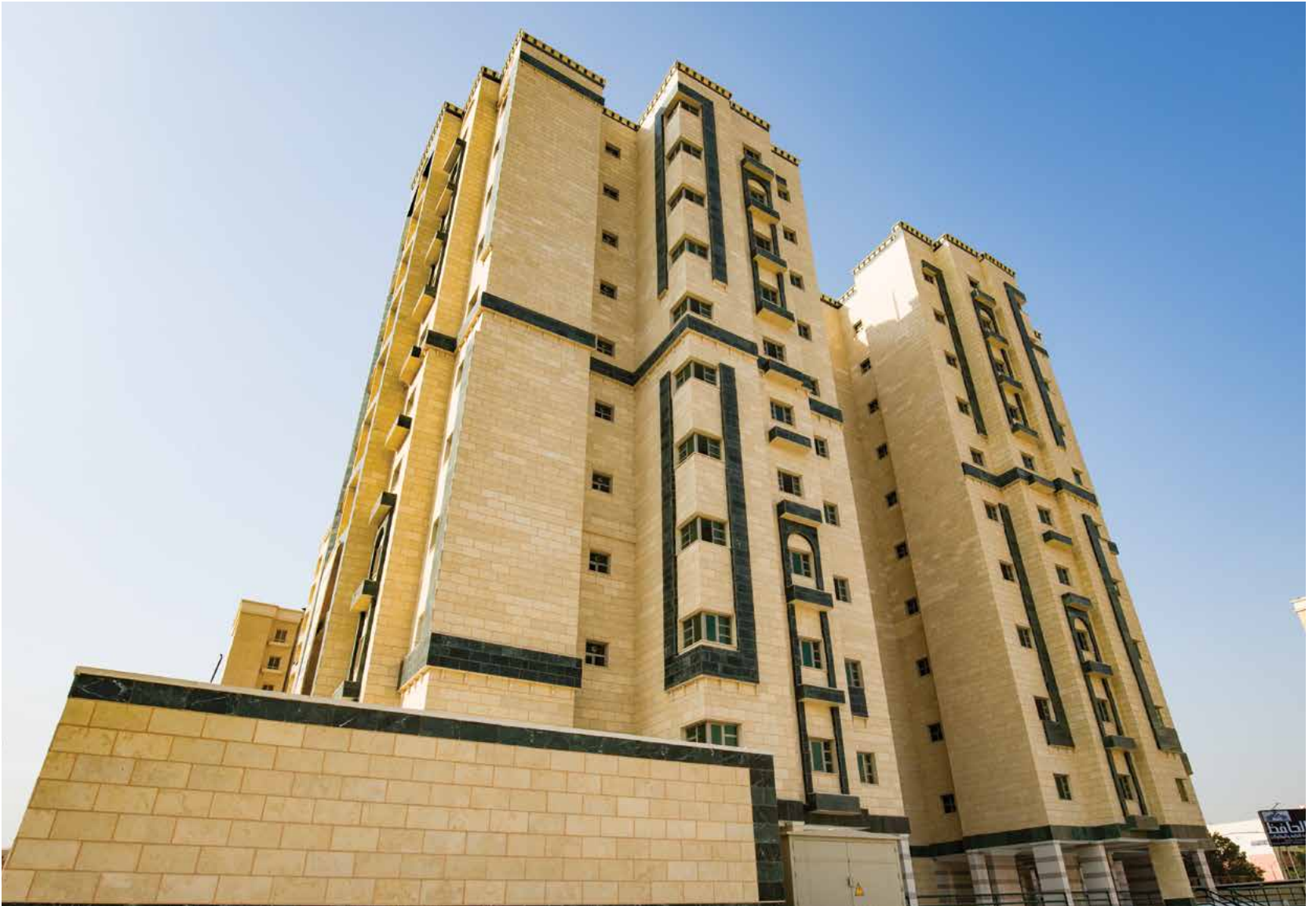
Stop : 17 - 1000 KG



Dr. Mamdua Al Enezi , Salmiya

Stop : 12 - 1000 KG





Ibrahim Al Mulla , Salmiya

Stop : 12 - 1000 KG



Job References



Rashid Al Mutheri , Salmiya

Stop : 17 - 1000 KG





Hotel Muthar Shammary , Salmiya

Stop : 14 - 1000 KG



Job References



Hussin Shaya , Salmiya

Stop : 15 - 1000 KG



xxx , Salmiya

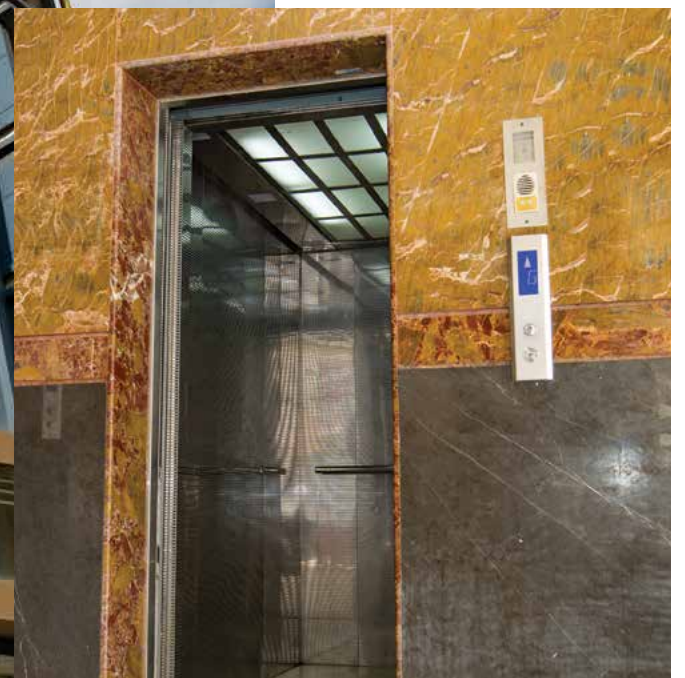
Stop : 15 - 1000 KG





Ali Murdi , Salmiya

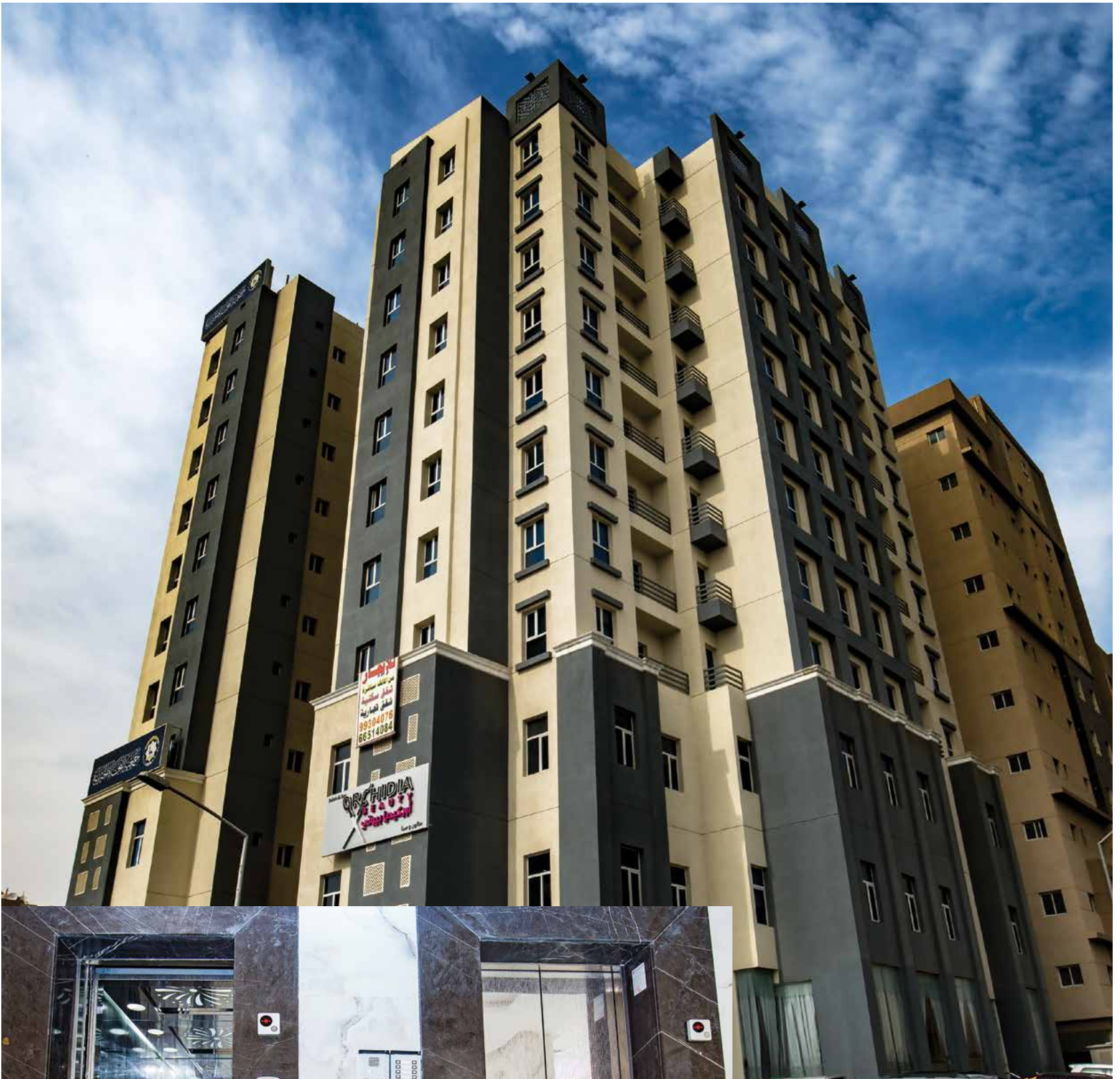
Stop : 18 - 1000 KG



Job References



 **Hotel Bravo , Salmiya**
Stop : 17 - 1000 KG



Muthab Mutheri, Hawally

Stop : 12 - 1000 KG

Job References



Slash, Hawally

Stop : 14 - 1000 KG

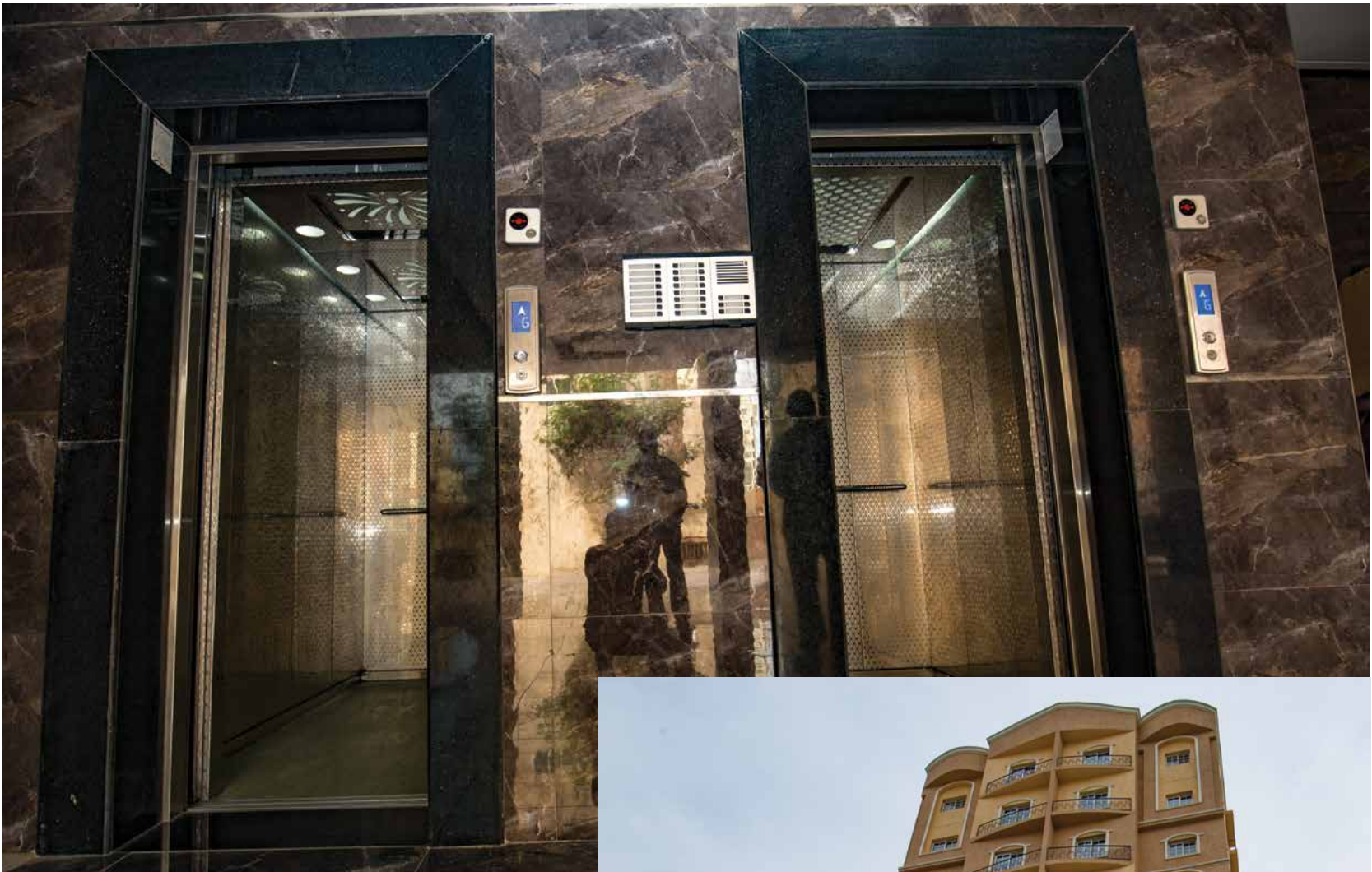




Bravo, Farwaniya
Stop : 12 - 1000 KG



Job References



 **Nazer Sanath, Farwaniya**
Stop : 12 - 1000 KG





Abdullah Al Ajeel, Hawally
Stop : 12 - 1000 KG

Job References



 **Dr. Adwani, Salmiya**
Stop : 12 - 1000 KG

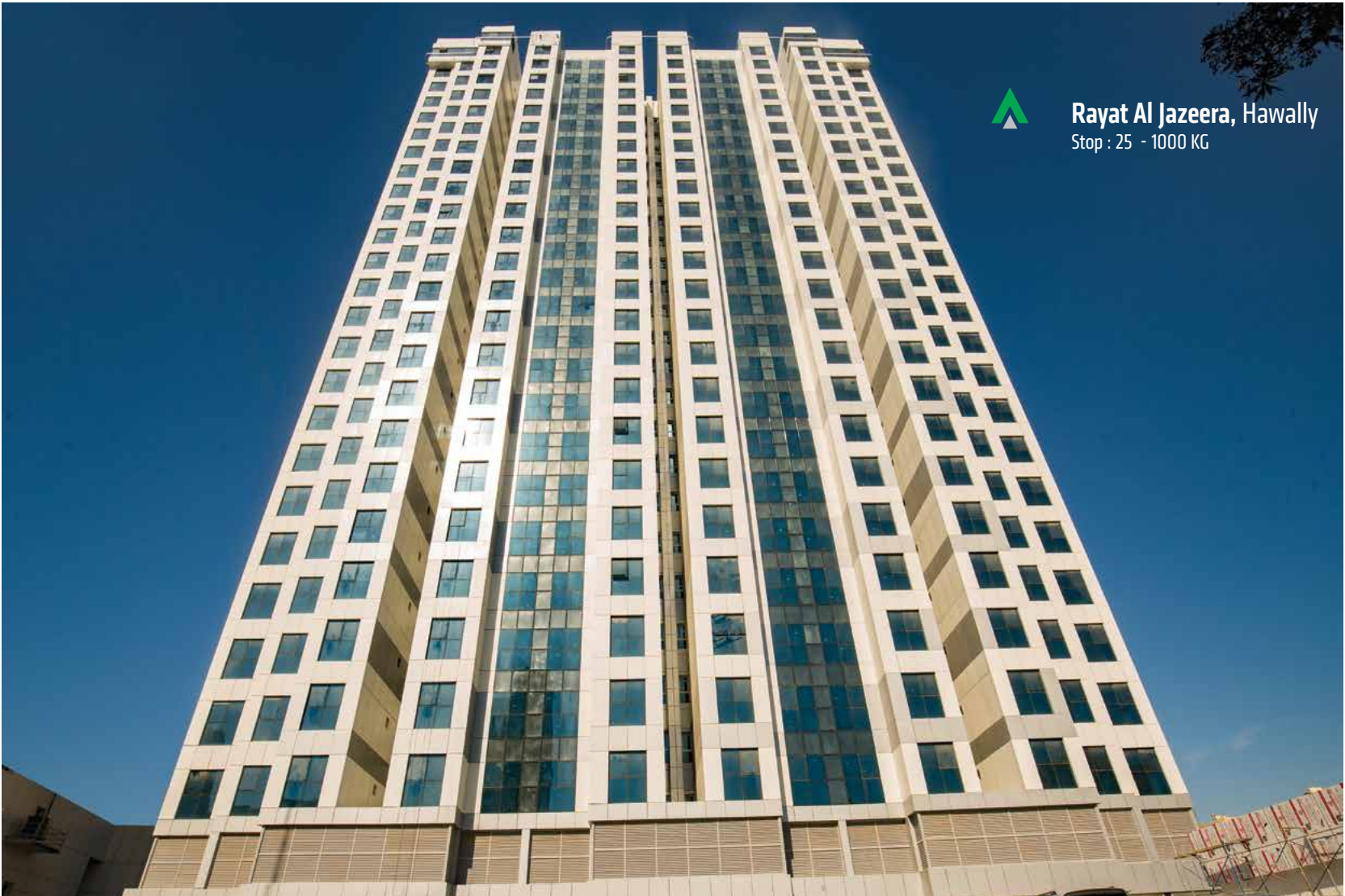




Fahad Muthab Mutheri, Salmiya
Stop : 11 - 1000 KG



Job References





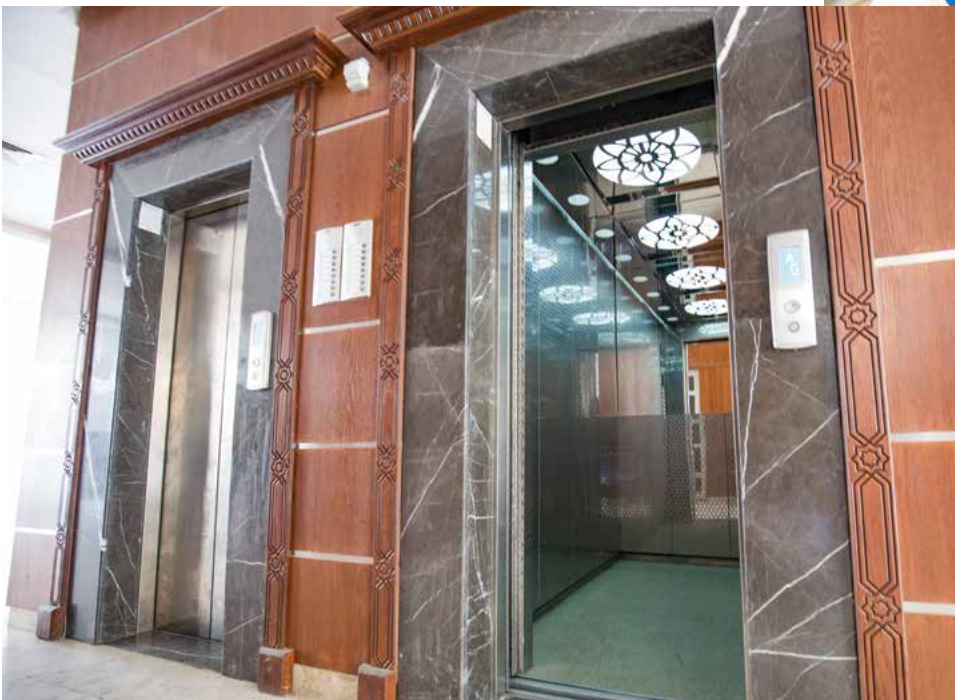
....., Hawally
Stop : 13 - 1000 KG



Nazer Sunath, Hawally
Stop : 13 - 1000 KG



Job References



 **Muthab Al Ajmi, Hawally**
Stop : 10 - 1000 KG

 **Hawally**
Stop : 10 - 1000 KG





....., Hawally
Stop : 10 - 1000 KG



....., Hawally
Stop : 10 - 1000 KG



Job References



 **Hotel Bravo, Salmiya**
Stop : 12 - 1000 KG





 **Muthab Mutheri, Salmiya**
Stop : 11 - 1000 KG



Job References



Diar Al Kuwait, Hawally
Stop : 12 - 1000 KG



Job References



Sala Al Jeri, Hawally
Stop : 12 - 1000 KG



Sala Al Jeri, Hawally
Stop : 12 - 1000 KG



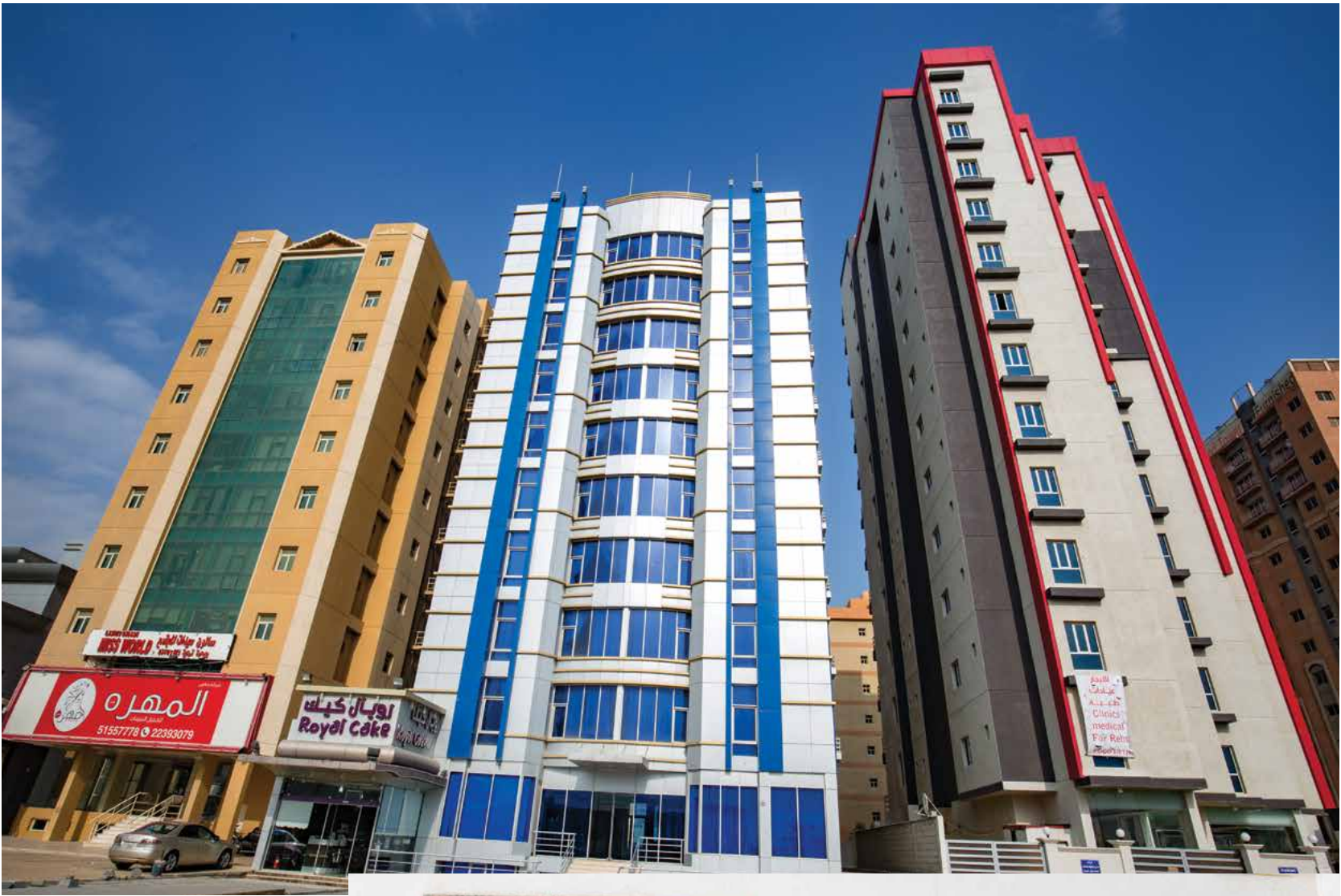
Adnan Salath, Mehabulah
Stop : 12 - 1000 KG



Adnan Salath, Mehabulah
Stop : 12 - 1000 KG



Job References

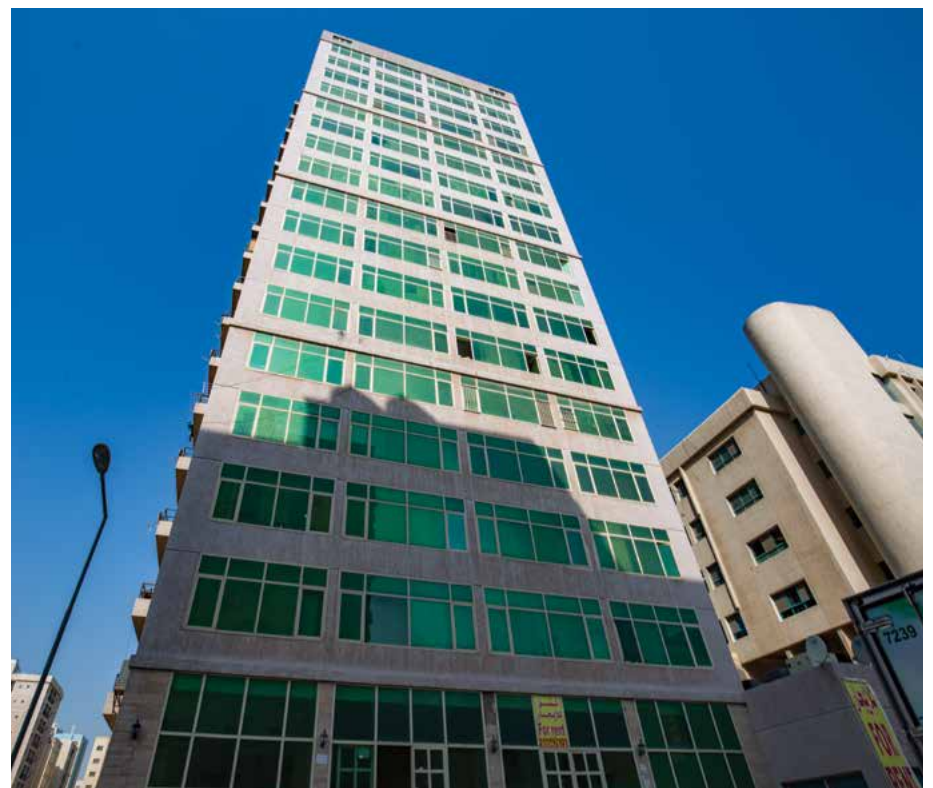


Salah Al Jeri, Mehabulah
Stop : 11 - 1000 KG





Faisal Al Omer, Hawally
Stop : 15 - 1000 KG



Job References



Al Usman Complex, Salmiya
Stop : 23 - 1000 KG



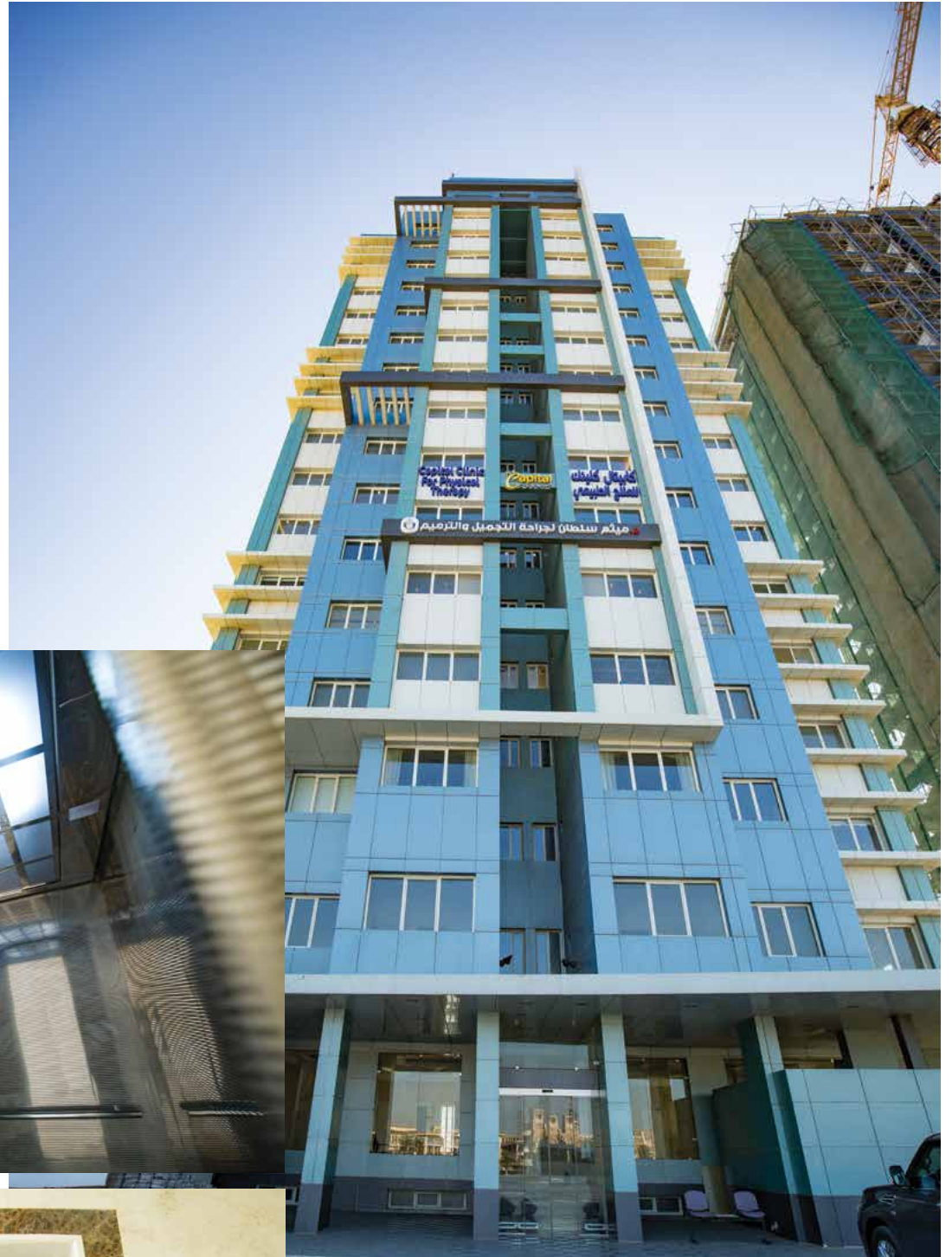
 **Huzain, Salmiya**
Stop : 17 - 1000 KG



Job References

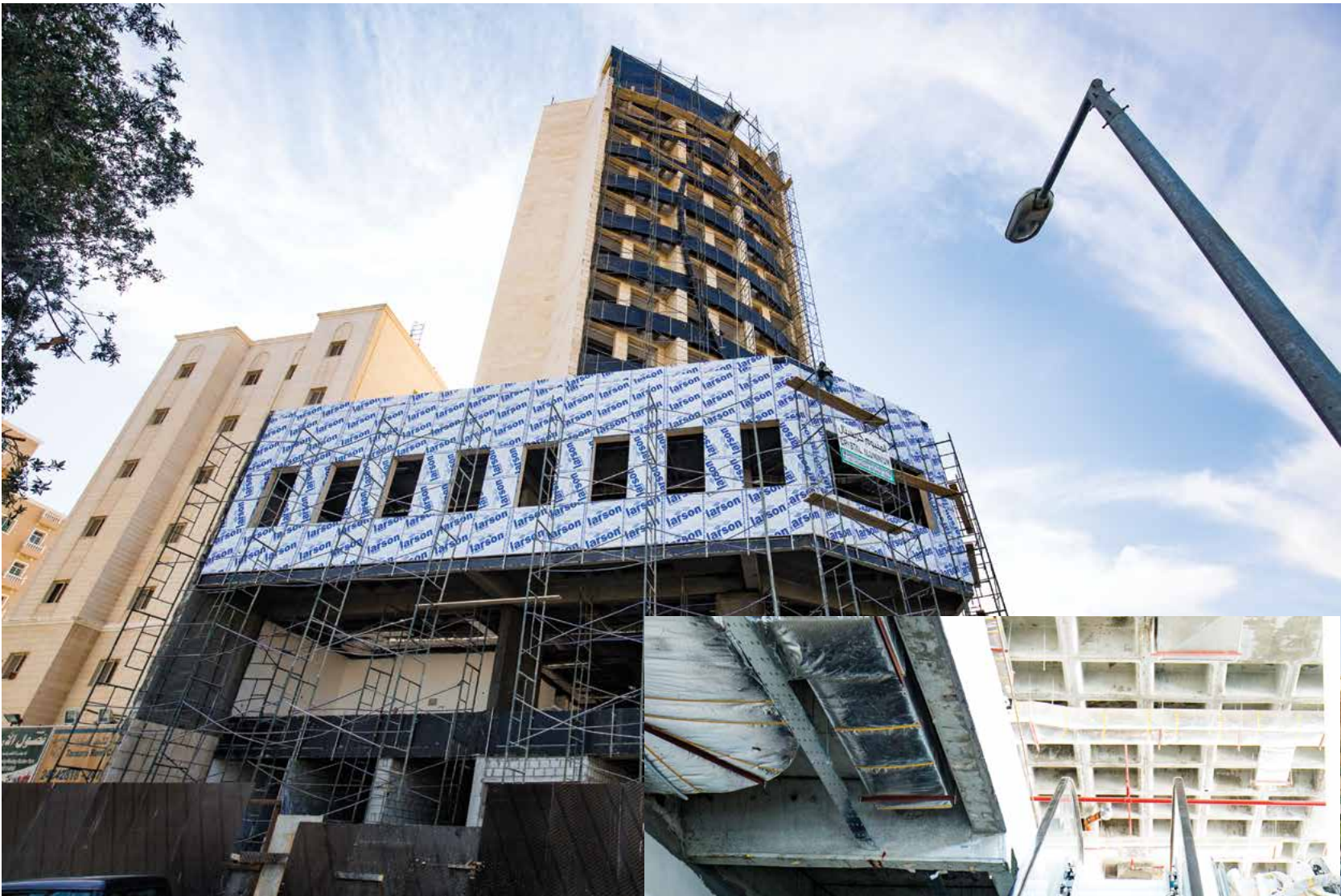



Art Company, Bneid Al Ghar
Stop : 18 - 1000 KG



Ali Murdi Anezi, Sharq
Stop : 17 - 1000 KG

Job References



 **Abu Turki, Farwaniya**
Hight - 4.5 Mtr.
Degree - 30°





 **MRG Yusefi, Salmiya**
Hight - 4.5 Mtr.
Degree - 30°

Team Fuji



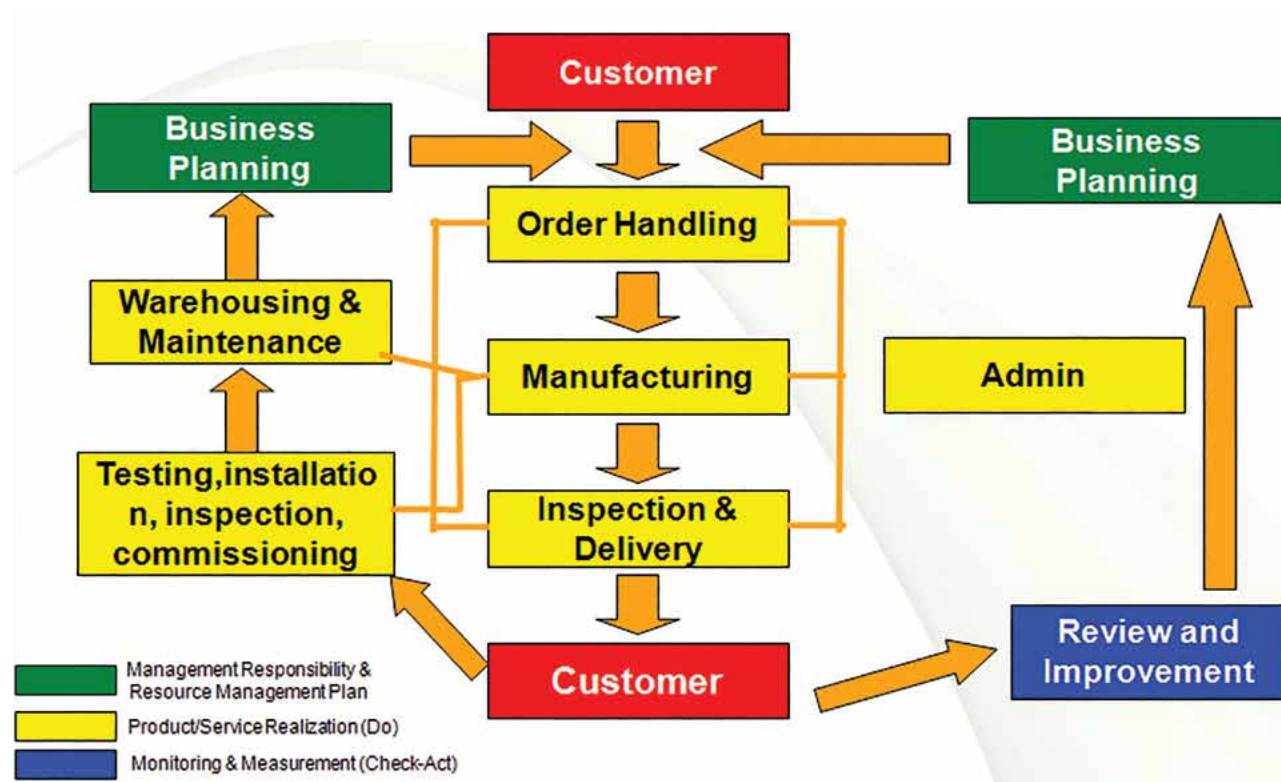


Fuji Factory

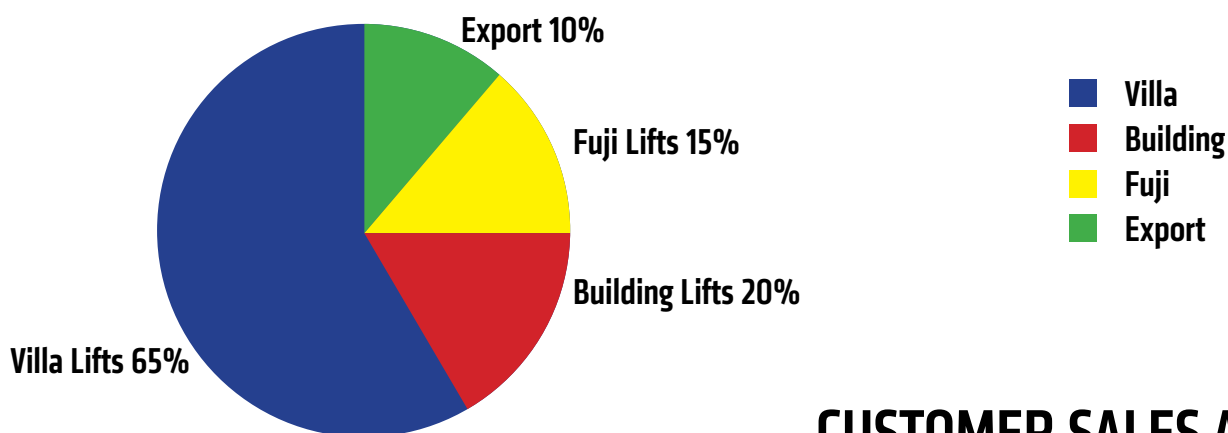




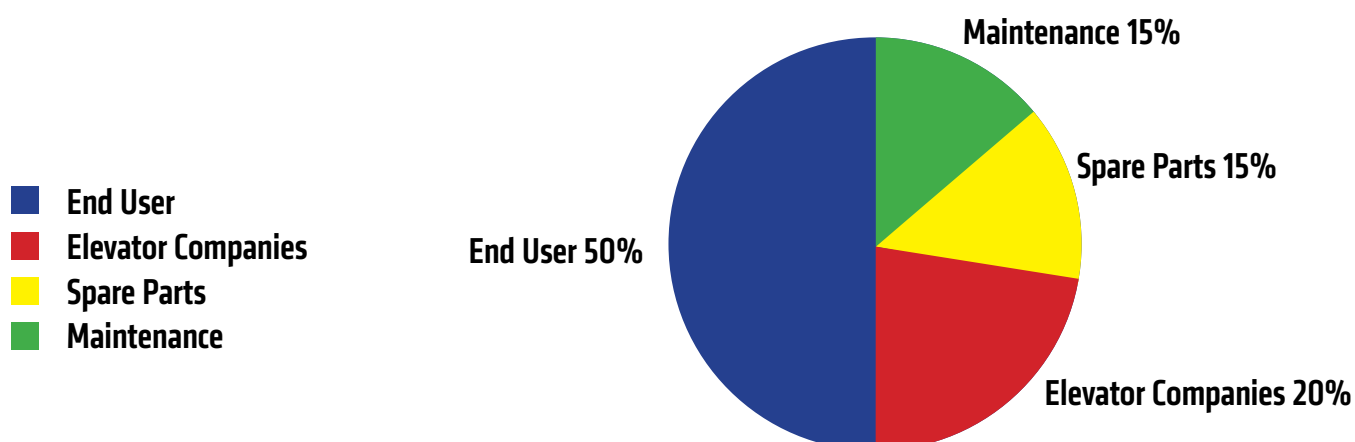
BUSINESS PROCESS CHART



PRODUCT SALES CONTRIBUTION



CUSTOMER SALES AND CONTRIBUTIONS



MAJOR CUSTOMERS

MAJOR CUSTOMERS



TARGET CLIENTS

1	End Users
2	Building Owners
3	Industrial Sector
4	Oil Sector
5	Construction Industries
6	Elevator Companies
7	Contractors

PRODUCT CATEGORIES

Villa Lifts
Building Lifts
High Raised Lifts
Dumbwaiters
Special Lifts



Villa Lifts

- CONVENIENCE TO YOUR LIFE STYLE
- NEW TECHNOLOGY WITH REDUCED SPACE
- SHAFT IS NOT REQUIRED WILL BE PROVIDED IN STEEL STRUCTURE



Building Lifts

- Buildings from 11 and above
- 1.6 m/s upto 2.5 m/s
- Fire rated Doors with 120mins
- Integrated Control
- Serial communication
- Soft start and stop



Dumbwaiters

- Modern Dumbwaiter
- Drum type machine
- Pulley type machine



Special Lifts

- FIRE PROOF LIFTS

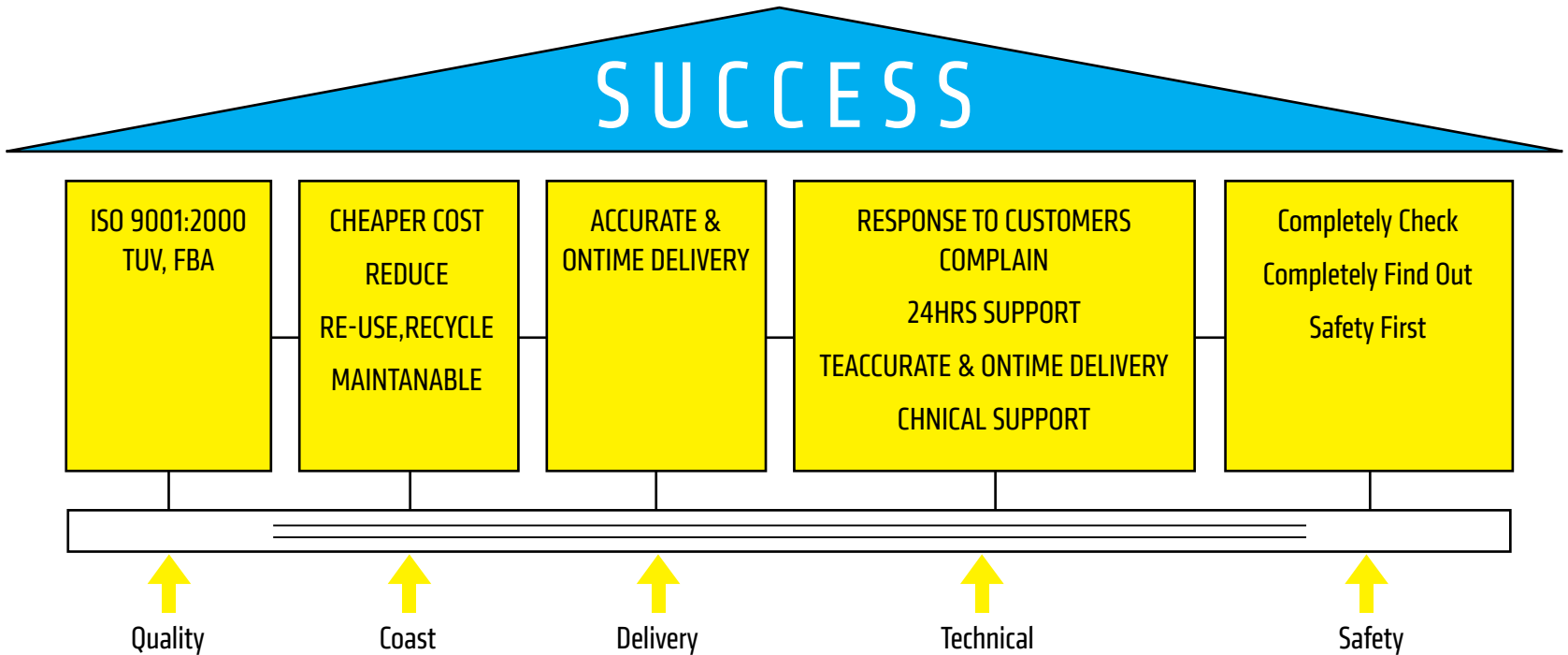


PRODUCT APPLICATION

- AIRPORTS
- SEAPORTS
- OIL SECTOR
- POWER STATIONS
- PRIVATE VILLAS
- COMMERCIAL BUILDINGS
- PRIVATE SECTORS
- SHIP YARDS
- PLACES WHERE LIFTS ARE IMPORTANT



STRATEGIES, MACHINES & EQUIPMENT



Contingency Plan

Category	Potential Risk	Containment Plan	Preventative Measures
Material	Material shortage due to: Delivery Delay Uncontrollable Reason	Maintain Stock Level Finish Goods 1 month Buffer Stock	<ul style="list-style-type: none"> Give 3 months forecast to suppliers Regular Visits to local suppliers Monitor suppliers performance on a monthly basis
Machine	Machine Breakdown	<ul style="list-style-type: none"> Conduct Trial for alternative machine Keep back up sub con incase alternative machine is available 	<ul style="list-style-type: none"> Strictly follow machine preventive maintenance program Maintain stock of commonly used spare parts of machines
Mold	Mold Damage	Conduct Immediate mold repair	Conduct mold preventative maintenance after each production
Man	Line Stoppage due to labor problem		<ul style="list-style-type: none"> Strengthen labor management council activities. Regular LMC meetings (twice a month) to discuss LMC concerns and to address labor issue
Power Outage	Electrical Supply breakdown	Standby Generator is available incase of power outage	<ul style="list-style-type: none"> Continue conducting substation preventative maintenance Quarterly check up of electrical circuit breakers to check for any abnormality
Fire	Occurrence of Fire	Implement Emergency Response Procedure	<ul style="list-style-type: none"> Continue to implement monthly 5's & safety patrol to verify that all safety measures are implemented. Strictly follow external audit advise and improvement suggestions.



STRATEGIES, MACHINES & EQUIPMENT

Mechanical Power Press

Brand	Company	Type	Machine Qty.
Japan	Amada	CNC Bending	1
Turkey	Baykal	Hydraulic Bending	3
Turkey	Baykal	Cutting Machine	3
Turkey	Eramak	Hydraulic Bending	1
Turkey	Eramak	Cutting Machine	1
Taiwan	GEKA	Multi Tool	1
Turkey	HKM45	Multi Tool	1
Pakistan		Punching machine	6
Turkey		Spot Welding	2
Europe		Bandsaw	2
Italy	Euromac	CNC Punching Machine	1
GERMANY	TRUMPH	FIBER LASER MACHINE	1
ENGLAND	CEWALC	CORE CUTTING MACHINE	1
USA	VICTOR	Automatic cutting machine	1
Germany	LORCH	CO2 MACHINE	3



[illegible]



UNITED INTEGRATED HOLDING GROUP COMPANY

Manufacturing Area: 17500 SQ M

Manpower: 700 persons

UNITED INTEGRATED GROUP

- United Escalators & Elevators
- Hydra Gulf Electricals
- Wataniya Elevators
- National Eng For Elevators
- Fuji Lifts KW
- United Elevators Factory
- SKL International for Stainless Steel

FACTORIES:

- United Elevators Factory Subhan Kuwait
- Hydra Gulf Factory Subhan Kuwait
- United Saudi Factory Dammam Saudi
- Fuji Lifts Kw Factory Subhan Kuwait
(Joint Venture with Malaysia Fuji Elevators)
- Tremco Factory Subhan Kuwait



FUJI ELEVATOR FACTORY

Business Address : Subhan South Street-101 Block-9 Kuwait
Contact Numbers : Tel : 24763799, 24714787
: Fax : 00965-24746029
Email : info@fujiliftskw.com
Website : www.fujiliftskw.com